

Accredited by the



Holiday Language Course

Our Holiday Language Course is available during the summer and has been designed for both teenagers and adults who have already started learning English and wish to improve their overall command of the language.

The course aims to combine a serious programme of study with an enjoyable holiday. It offers students the opportunity of getting to know Britain, meeting people from other countries, making new friends, etc. using English as the means of communication.

The programme includes:

- English language tuition with qualified EFL teachers (15 hours per week) in multi-cultural classes
- Full social programme in the afternoons and some evenings
- Full-day excursions on Saturdays
- One half-day excursion per week
- Sport once a week

Full-board accommodation with carefully selected homestay providers can be organized on request.



The Course

Our main objective is to make students learn as much useful English as possible during their stay. The course includes 15 hours of tuition per week, Monday to Friday, with a strong emphasis on developing the more communicative aspects of the language, i.e. speaking and listening.

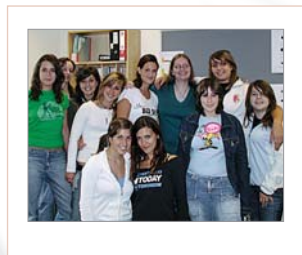
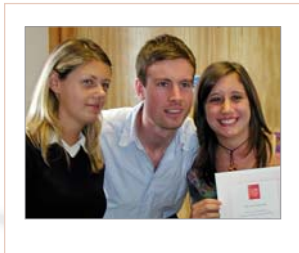
The skills of reading and writing are also covered as well as work on grammatical structures and pronunciation. CELT's teachers are chosen for their professionalism and enthusiasm to help ensure that effective language learning takes place.

The average class size on the Holiday Language Course is 12, though, at times, there can be up to a maximum of 15 students per class. Students are tested on their first day of the course (Monday) and are given an introductory talk about their course and living in Cardiff.

Course	Holiday Language Course
Hours	15 per week + social activity programme
Duration	Minimum 2 weeks
Age Range	13 – 17 (teenagers) and 18+ (adults)
Levels	Elementary to Advanced



We can cater for all levels except beginners on this programme. The minimum age to enrol on this course is 13. At the end of the course, students receive a certificate of attendance which includes a progress report.



The Social Programme

After lessons, we offer students a varied social programme consisting of sport, excursions, cultural visits, and evening activities (please see our sample programme). Our teachers help students make the most of their time here by accompanying them on all activities.

Full-day excursions are normally arranged to London, Bath, Swansea, and the Brecon Beacons National Park, while our half-day excursions give students a chance to discover other local attractions such as "Big Pit" in Blaenavon (a coal mine transformed into a living museum), the "St Fagans National History Museum" (an open-air museum), and various castles in South Wales.



Optional evening activities include cinema visits, bowling, ice-skating and an international disco most weeks.



celt
CENTRE FOR ENGLISH
LANGUAGE TEACHING

6-8 Salisbury Road
Cardiff CF24 4AD
United Kingdom
Tel: +44 (0)29 2033 9290
Fax: +44 (0)29 2033 9515
Website: <http://www.celt.co.uk>
E-mail: english@celt.co.uk